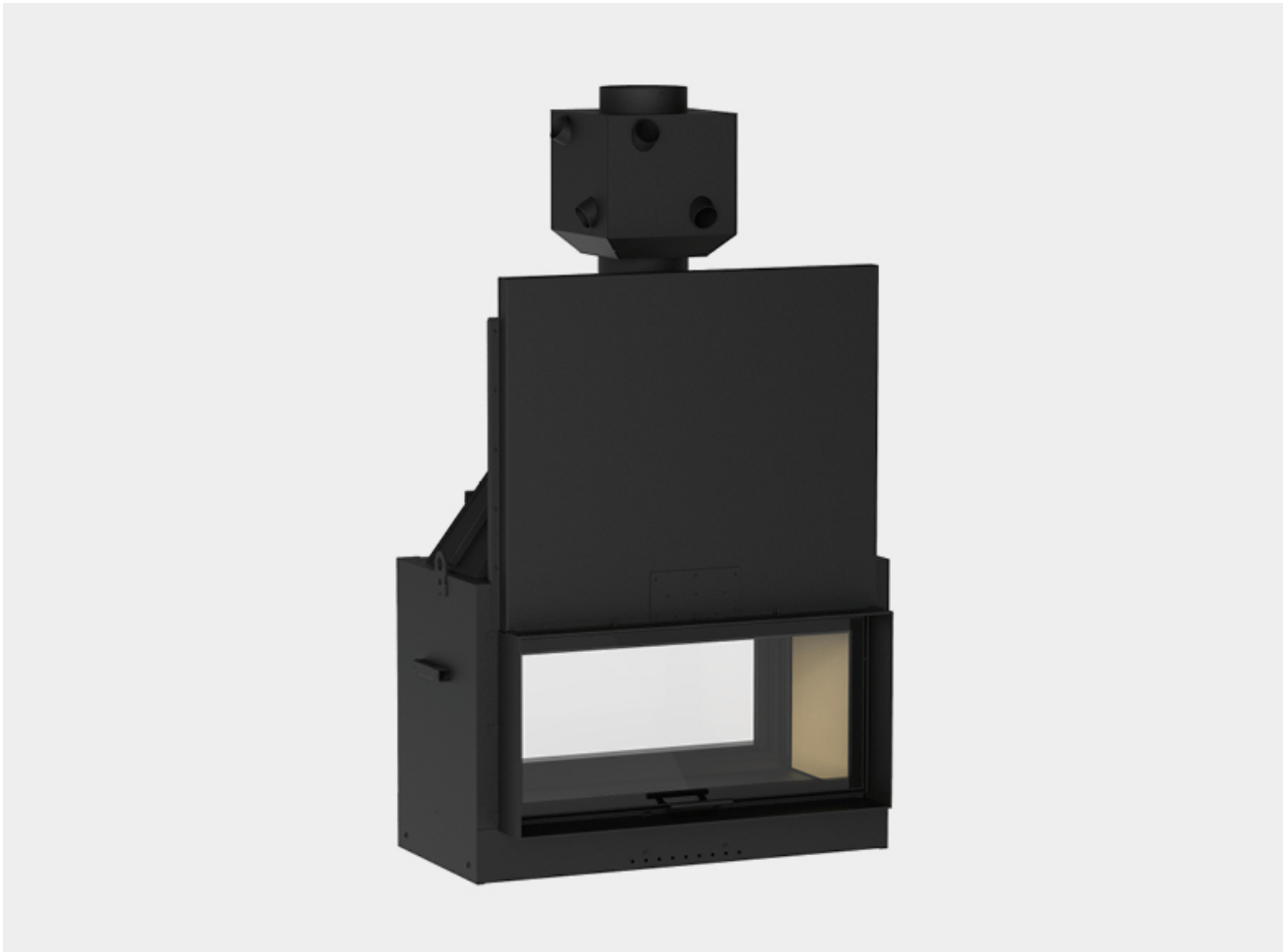


Piazzetta's ME 90 B is a wood-burning fireboxes with an innovative and calibrated rise and fall door. Available in natural convection or with the forced air, single or dual fan Multifuoco® System or Multifuoco System Plus.

# ME 90 B



## GENERAL FEATURES

- Heating: natural convection, radiation or optional ductable forced ventilation with the Multifuoco System® or Multifuoco System Plus,
- Structure: coated steel with closed firebox
- Firebox: Aluker®
- Hearth: cast iron
- Hood: steel
- Door profile: for flush dry wall installation, in painted steel 12 cm depth
- Handle: in painted steel, removable
- Primary air: manually adjustable
- Secondary air: pre-determined
- Flue gas adjustment: manual valve opening with console on firebox
- Standard flue outlet position: top
- Fuel: wood

## TECHNICAL DETAILS

- Energy efficiency class A+ (G → A++)
- Rated output max kW 15,0
- Rated efficiency power % 82,5
- Rated consumption max kg/h 4,5
- Vertically sliding opening cm 30
- Firebox opening (W) - Dimensions for the passage of wood cm 89
- Firebox opening (H) - Dimensions for the passage of wood cm 22,5
- Mouth of firebox (W) - Minimum dimensions of mouth of cladding cm 90,5
- Mouth of firebox (H) - Minimum dimensions of mouth of cladding cm 44
- Weight kg 275
- Model ME 90 B

